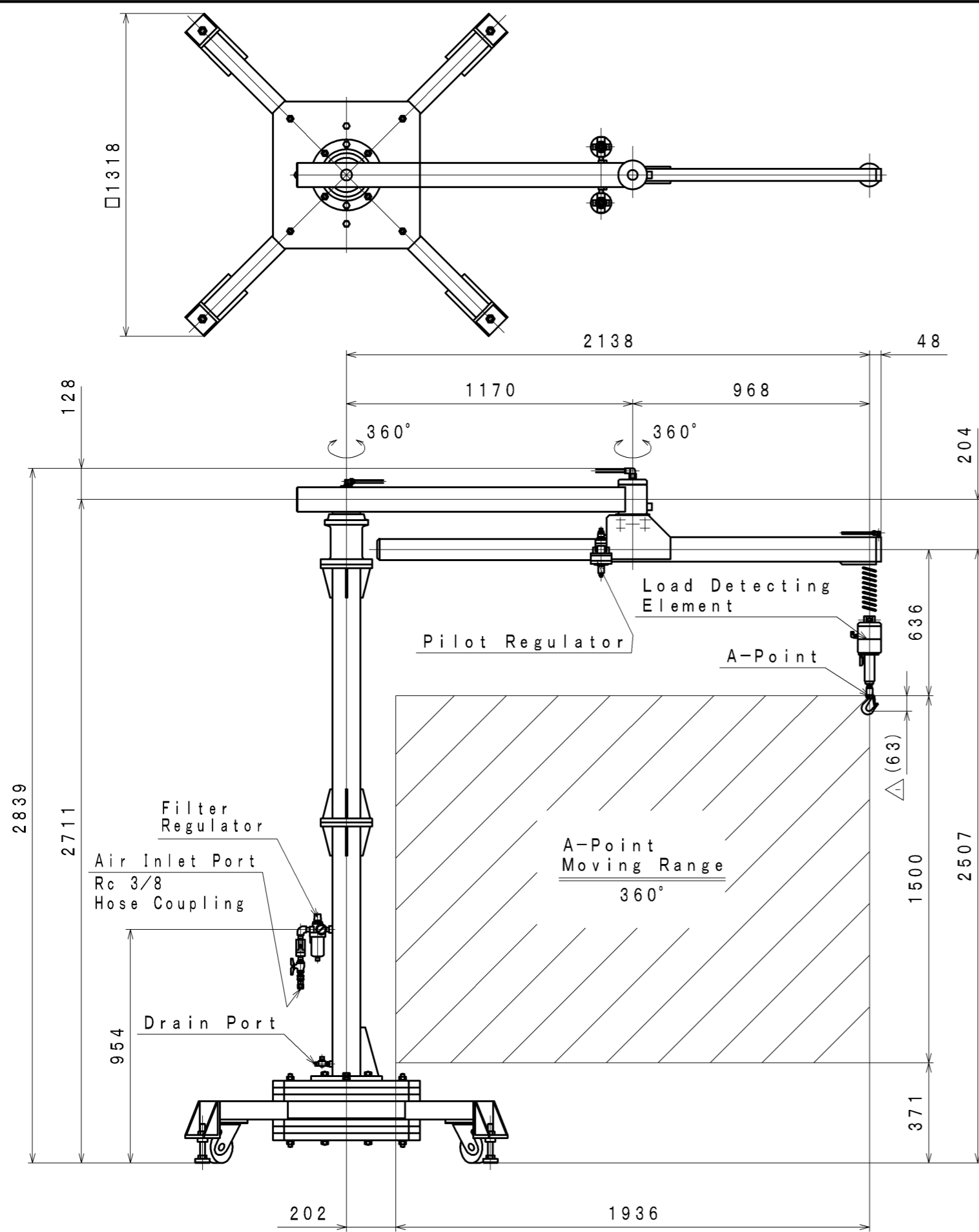


SIGN	REVISION	DATE	BY
△	Renewal	160411	W. S



**SPECIFICATION** △

Air Pressure	0.6 MPa (6 kgf/cm <sup>2</sup> )
Maximum Suspension Load (Attachment Weight is contained.)	1.2 kN (120 kgf)
Vertical Movement Range	1500 mm
Maximum Turning Angle	360°
Weight	約800kg

APPROVED	CHECKED	REVIEWED	DRAWN	PARTICULARS	OUTLINE DRAWING	DATE	JAN. 12. 1996
M. S		R. T	W. S	MODEL	BTA120A-S	NOTE	
					Air Balancer	Z94-034	
SAN-EI SEIKI SEISAKUSHO CO., LTD.					DWG. NO.	E396-006	SCALE 1/20