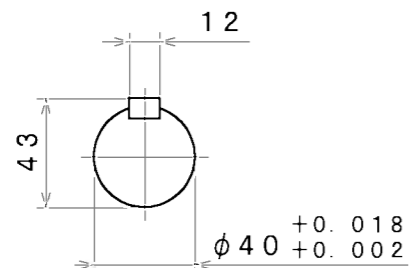
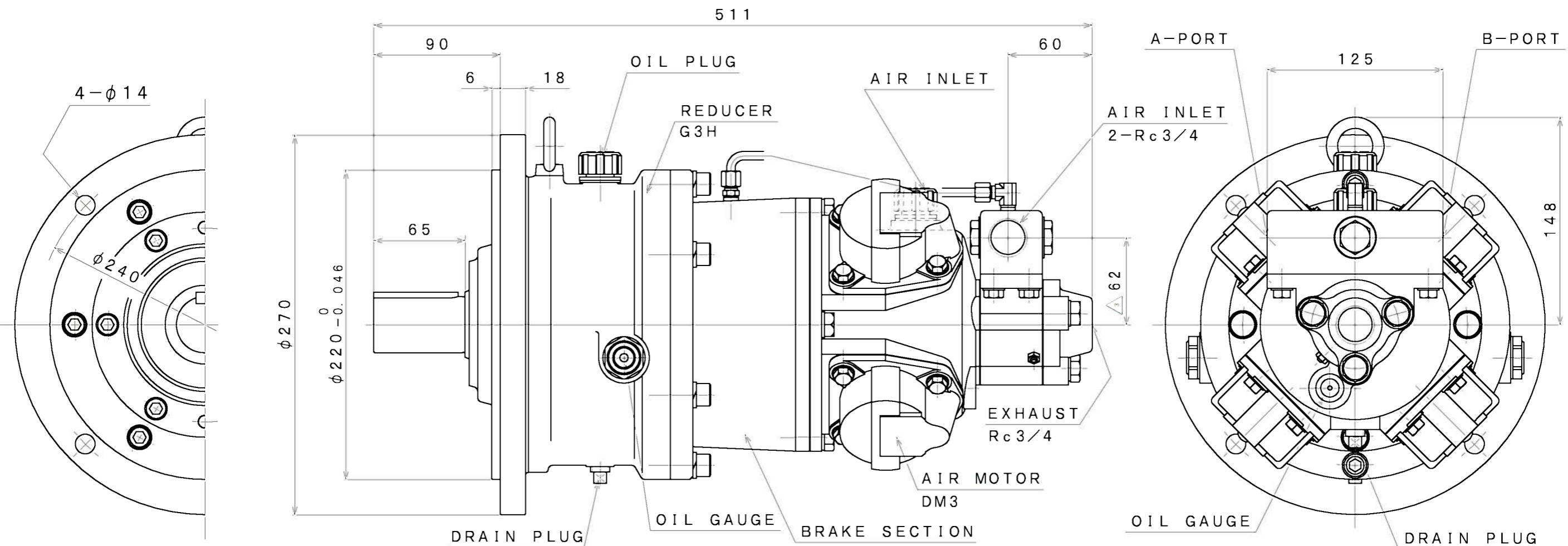


SIGN	REVISION	DATE	B Y
△1	Renewal	111103	R. T
△2	Correction	120323	R. T
△3	Renewal	150406	W. S



A-PORT      B-PORT  
DIRECTION



SPECIFICATION

AIR PRESSURE	AT MAXIMUM OUTPUT				* ALLOWABLE SHAFT LOAD		LUBRICATING OIL		MASS
	OUTPUT	SPEED	TORQUE	AIR CONSUMPTION <sup>△</sup>	RADIAL	THRUST	AIR MOTOR	REDUCER	
(MPa)	(kW)	(rpm)	(N·m)	(m <sup>3</sup> /min (nor))	(kN)	(kN)			(kg)
0.6	1.65	400	39.4	2.0	2.6	0.5	△1 JIS K2213-1 Turbine Oil	JIS K2219 Gear Oil	△2 about 56
0.5	1.31	360	34.8	1.7			ISO VG32	ISO VG220	
0.4	1.05	320	31.3	1.4			(110cc)	(150cc)	

\*:At Mid of Shaft

APPROVED	CHECKED	REVIEWED	DRAWN	PARTICULARS	OUTLINE DRAWING	DATE	JAN. 08. 2010
M. M		W. S		MODEL	DM3BG3H4F	NOTE	
					AIR MOTOR	Z97-075	
SAN-EI SEIKI SEISAKUSHO CO., LTD.				DWG. NO.	E310-020	SCALE	1/3