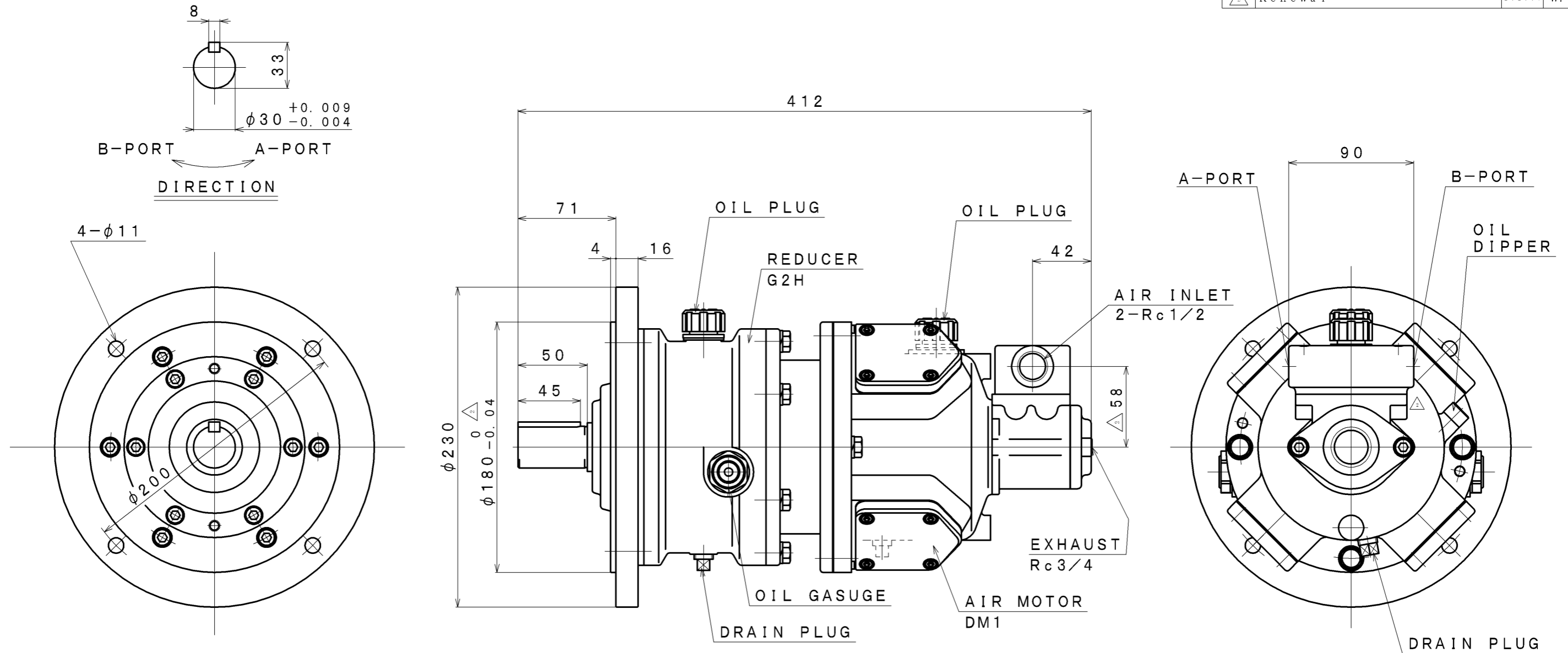


SIGN	REVISION	DATE	B Y
△1	Renewal	111101	R. T
△2	Renewal	131007	W. S



SPECIFICATION

AIR PRESSURE (MPa)	AT MAXIMUM OUTPUT				* ALLOWABLE SHAFT LOAD		LUBRICATING OIL		MASS (kg)
	OUTPUT (kW)	SPEED (rpm)	TORQUE (N·m)	AIR CONSUMPTION Δ_2 (m ³ /min (nor))	RADIAL (kN)	THRUST (kN)	AIR MOTOR Δ_1 JIS K2213-1 Turbine Oil ISO VG32 (140cc)	REDUCER JIS K2219 Gear Oil ISO VG220 (130cc)	
0.6	0.75	250	28.6	0.86	2.3	0.4	Δ_2		about 26
0.5	0.56	230	23.3	0.72					
0.4	0.43	210	19.8	0.53					

*:At Mid of Shaft

APPROVED	CHECKED	REVIEWED	DRAWN	PARTICULARS	OUTLINE DRAWING	DATE	JAN. 28. 2010
M. S	K. S	R. T	W. S	MODEL	DM1G2H6F	NOTE	
					AIR MOTOR	Z97-010	
SAN-EI SEIKI SEISAKUSHO CO., LTD.				DWG. NO.	E310-088	SCALE	1/3